



**spark!**

LONDON'S ORIGINAL  
EDUCATION BUSINESS PARTNERSHIP

**AN INTRODUCTION FOR  
SECONDARY SCHOOLS**

## Our partners include



# Introduction

Spark! is one of the UK's leading education-business connectors creating 5000+ opportunities every year for young people. We were established in 1980 and are a registered charity. GSK kindly host Spark! at their HQ in Brentford.

We can help:

- inspire your students on their life after school (click to play the video opposite);
- contribute to independent CEIAG; and
- ensure Ofsted and HSE compliance.

Our services are organised around three areas:

**Work Experience & Internships Service** – Our KS4/5 Work Based Learning (WBL) programme offers work placements, work shadowing and internships. Our focus is on safe placements with high quality content ensuring that you secure maximum impact from your investment.

**Employability & Enterprise Skills Service** – Offers creative and innovative activities that use the context of creative and inspiring Work Related Learning (WRL) experiences to introduce young people to learning about business and working practices. Through our pioneering KICKSTART programme we bring together WRL and WBL in an inspiring employability and enterprise skills programme that can be adapted to the needs of Level 1, 2 and 3 learners.

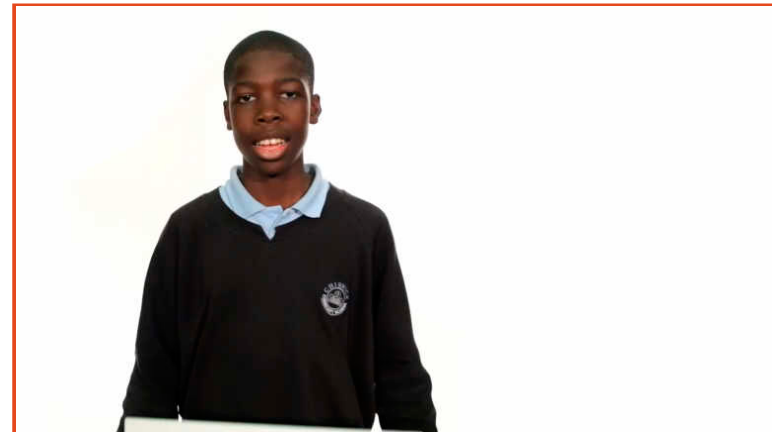
**Consultancy and Continuing Professional Development (CPD)** – Helping build your school's capacity and capabilities through strategic advice in employability skills development and education-business partnership, Masterclasses and our Practitioners' Network.

Spark! and our partner schools agree a bespoke programme each year. Read on for an initial introduction to each of these areas and then please get in touch to arrange a meeting.



“In Spark! we are lucky to be able to call on such quality.”

*Tony Ryan, Head teacher, Chiswick*



# Work Experience & Internships

Spark! offers a range of work experience services for schools at KS4 and KS5. These are usually bespoke to in response to school's specific needs. Schools can opt for:

- a) **Placements for an entire KS4 or KS5 year group.** Spark! undertake Health and Safety/suitability checks on *all* placements whether student or Spark! found; and/or
- b) **Placements for targeted groups of students.** These include pre-NEET young people, or those undertaking vocational programmes such as Traineeships or BTECs with specific learning outcomes required from the placement.

## The benefits of our quality driven approach

- Employer contact database developed over 30 years with 9800+ placement opportunities
- Supported pre-placement student preparation in school
- Placements checks and re-checks meet all the current guidelines of the DfE and HSE
- Quality of placement content is constantly improved through careful development of placement descriptions with employers
- Time-consuming paperwork is kept to a minimum

Spark's annual delivery cycle ensures a quality service for our clients:



# Employability and Enterprise Skills

Spark's Employability & Enterprise Skills Service (Business Links) offers schools a diverse menu of activities. These can be delivered on your school site or, for collaborative events where more than one school is participating, at a shared school or business venue. Activities are planned, typically on an annual cycle, to meet the needs of your school. New opportunities are introduced throughout the year.



## Benefits

- Direct experience of the world of work to develop young people's workplace knowledge, skills and understanding - click to play the video opposite of a Spark! Science Day.
- Introduce your school to a growing number of companies and community organisations that will actively support initiatives to raise aspirations, motivation & achievements of young people.
- Invitation to enter the annual Spark! Partnership Awards which recognises, rewards and supports the business link activities in which schools engage.

## Subscriptions and service menu

Schools that subscribe to a package of services at the start of the year secure a 25% discount over those that commission services on an ad hoc basis. Many of our services are supported by external funding sources making our offer extremely cost effective for schools:

- **Enterprise Challenges** – explore and solve a specific enterprise or sector-based problem introduced and assessed by industry professionals.
- **Higher Education & Apprenticeship Fairs** and **Careers Days** – will help your students plan their careers and develop their employability skills. Our **partnership with Eton College** helps inspire and develop high flying students so they can secure places in the UK's top universities.
- **Competitions** – BP Challenge, Young Film-makers and Thames Water Reservoir to Tap all help make the connection to the world of work through a challenging competition process that excites young people's imaginations.
- **Sky Academy partnership** – a range of opportunities offered nationally and some exclusively through Spark.
- **Bespoke Employer Engagement** – our team can apply decades of experience and mobilise national experts to develop unique solutions for your school and students.
- **KICKSTART** – a full range of employability skills workshops at Levels 1, 2 or 3, including **Speed Networking** and **Mock Interviews**. See next page for full details...

# KICKSTART



KICKSTART is a new Employability Skills and Enterprise programme, developed with the support of leading HR consultancy Penna. It lasts five days – consecutive or spread across a school year – and concludes with an ‘Industry Insight Day’ at partner businesses.



Working with local businesses, students: choose a particular pathway (e.g. GSK for STEM subjects, or Sky for media); develop their employability skills in the context of that specific industry; and work on an Enterprise Challenge, such as designing an accessory for a Brompton Bike.

Students will participate in four employability skills workshops:

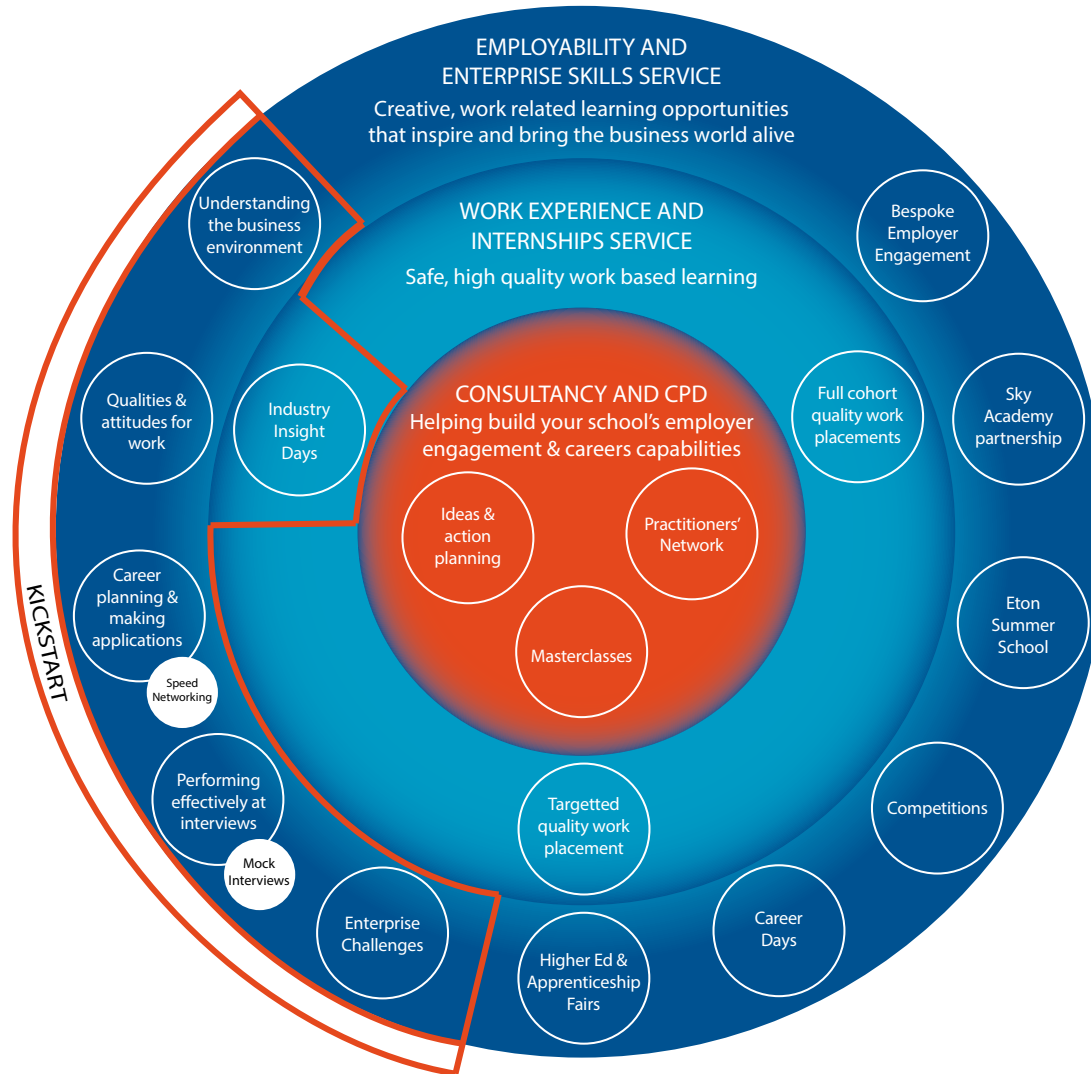
- Understanding the business environment, drawing on local Labour Market Intelligence
- Skills, qualities and attitudes for work
- Career planning and making applications, including Speed Networking and CV writing
- Performing effectively at interviews, including Mock interviews with industry volunteers

The programme is facilitated by Spark! and delivered by your teachers using our classroom resources. This supports teachers’ Continuing Professional Development, enthusiasm and readiness to engage with the world of work. Optionally students completing 100 Guided Learning Hours (an extension of the core programme) can secure a Level 1 or 2 certificate from City & Guilds.

Click to play the video opposite and find out why we are so excited about KICKSTART.



# Summary



Quality assured by



## Get in touch

Call or e-mail Ruby Mir, Head of School Services to arrange a meeting.

T: 020 8047 3350

E: [ruby.mir@sparklondon.org](mailto:ruby.mir@sparklondon.org)

More detail can be found in our full services guide, pricing guide and Service Level Agreement (SLA).



**Formerly Hounslow Education Business Partnership, Spark! was founded in 1980 and has been working with young people, schools and businesses creating new opportunities and igniting careers for over thirty years.**

**c/o GSK House, Rm D2-48, 980 Great West Road, Brentford, TW8 9AN  
T: 020 8047 3350**

Company Number: 7409565 | Charity number: 1138697  
UK Register of Learning Providers: 10033962

Spark! is the trading name of Hounslow Education Business Charity